

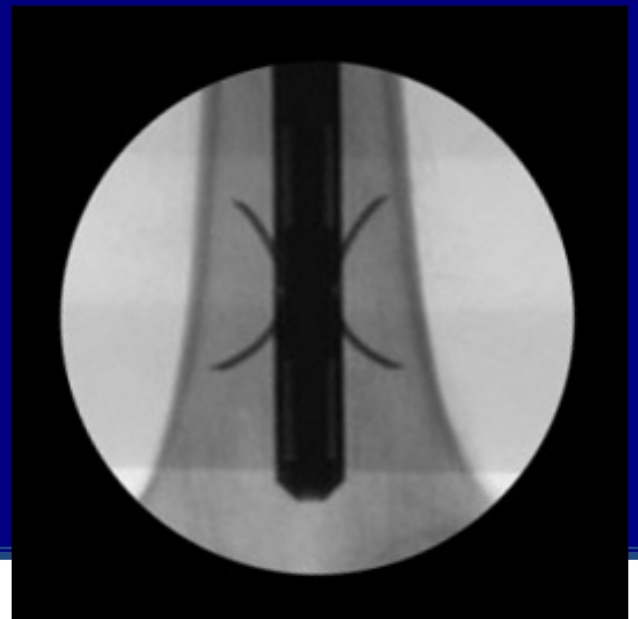


SLN Nail

The ***LATEST*** in Distal Locking.



Six retractable Talons™ designed to penetrate the cortex provide exceptional axial and rotational stability



**LESS TIME. LESS RADIATION.
FEWER INCISIONS.**



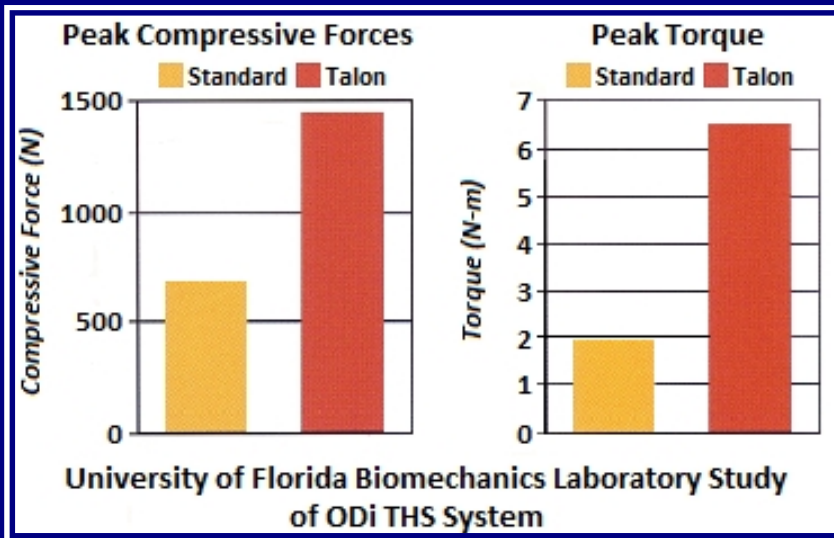
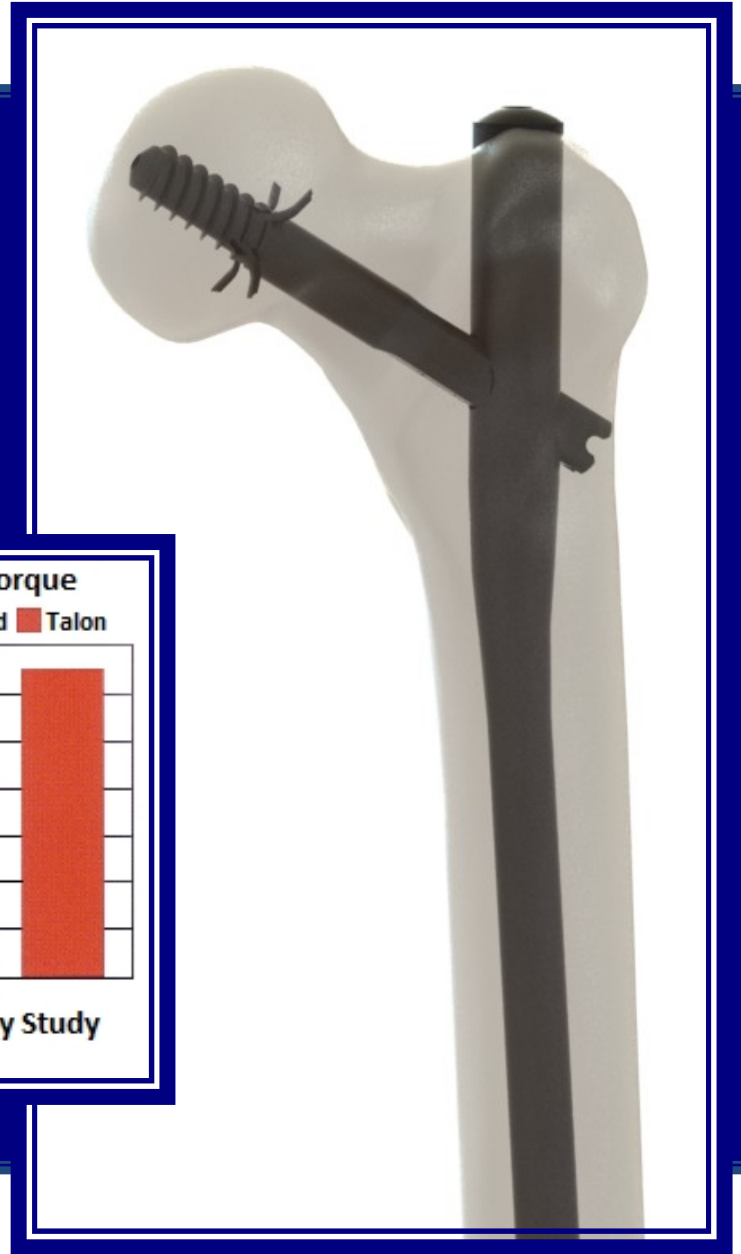
Perfecting Fixation.



SLN Nail

The **ULTIMATE** in Proximal Control.

Four retractable Talons™ anchor the lag screw into the dense cortical bone of the femoral head-neck junction for superior control



3X ROTATIONAL STABILITY.

2X COMPRESSION. VIRTUALLY NO CUT-OUT.



Perfecting Fixation.